

oakheart

£200,000

Offers In Excess Of
Hudson House, Leigh-On-Sea



- Gas Central Heating and Double Glazing
- Access to Communal Gardens and Private Storage
- Situated within walking distance of Chalkwell Station and Leigh Broadway
- Modern Open-Plan Living and Kitchen

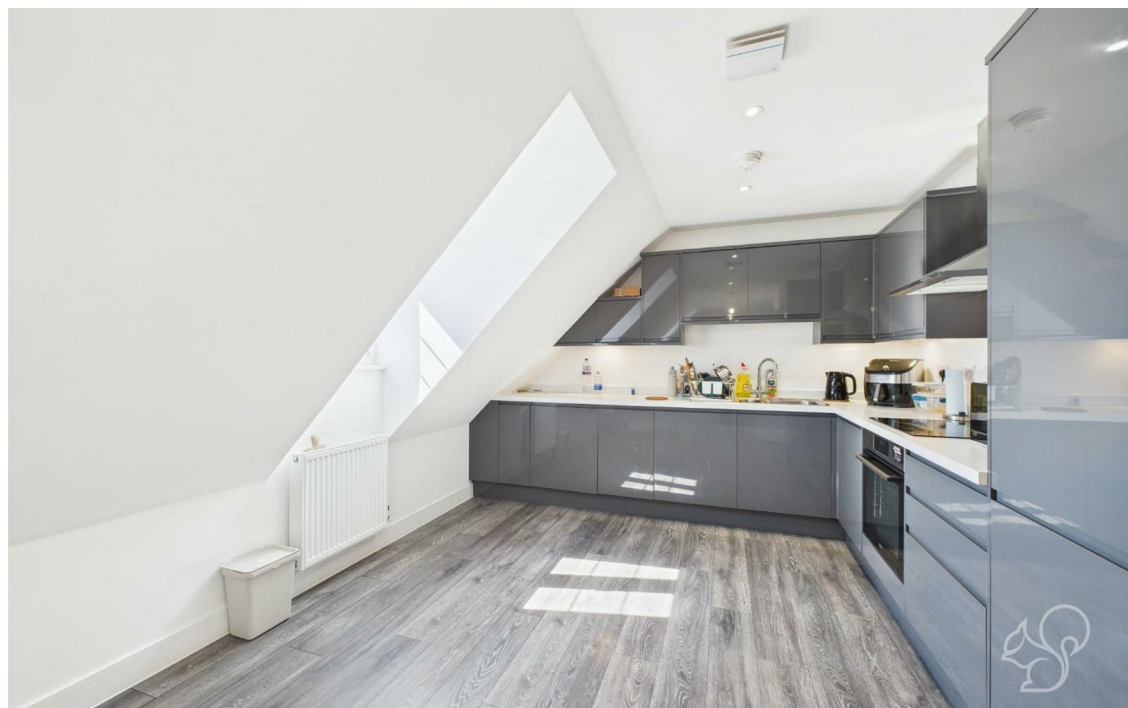
Welcome to Hudson House, a stylish top-floor apartment located in the charming area of Leigh-On-Sea. This nearly new flat, built in 2020, offers a modern living experience with a well-designed layout that maximises space and comfort. Spanning 538sqft, the property features a welcoming reception room, a comfortable bedroom, and a contemporary bathroom.

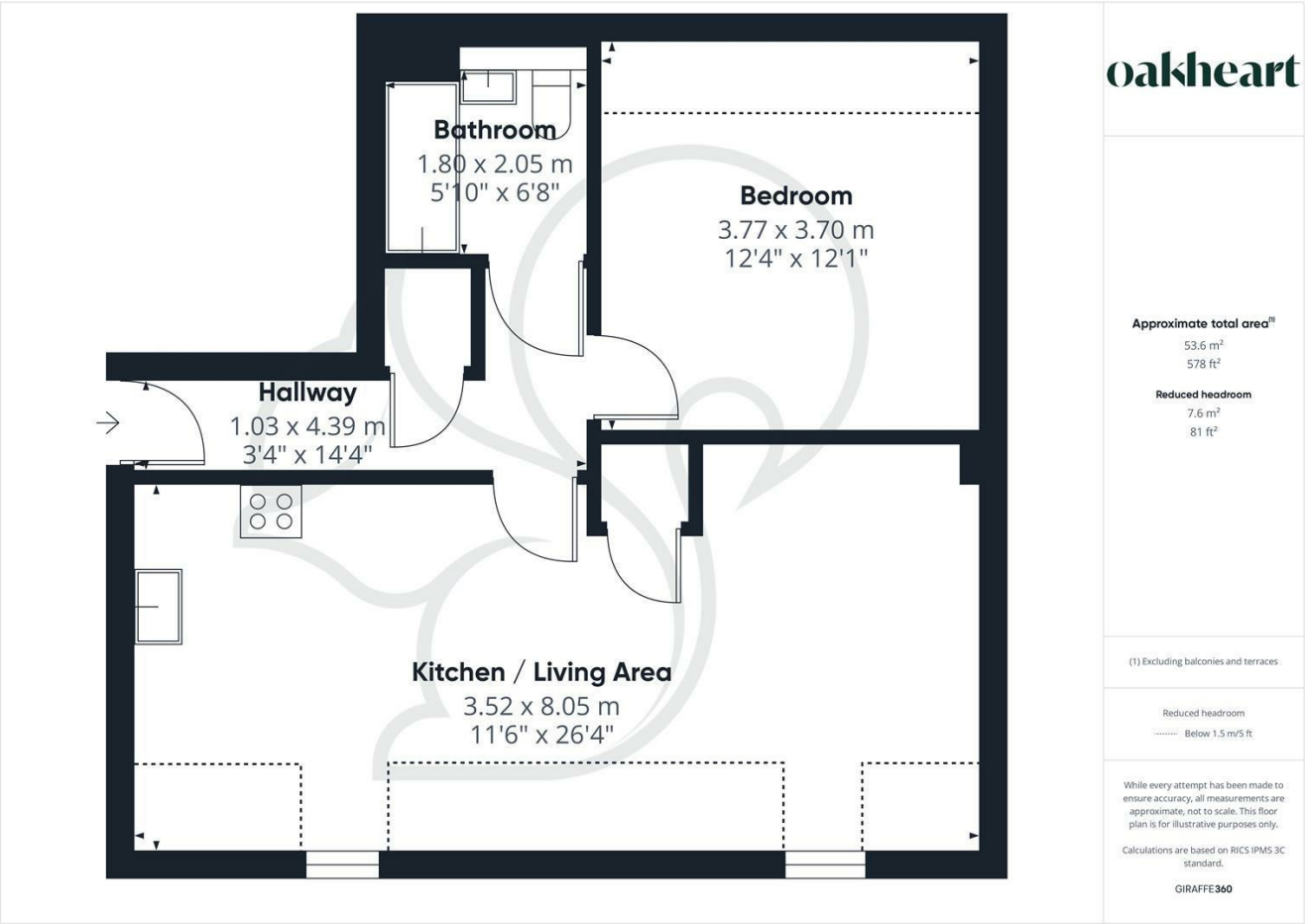
The heart of the home is the sleek kitchen, equipped with integrated appliances that cater to all your culinary needs. The apartment benefits from gas central heating and double glazing, ensuring warmth and energy efficiency throughout the year.

One of the standout features of this property is its prime location. Just a short stroll away, you will find Chalkwell Station, providing excellent transport links, as well as the vibrant Leigh Broadway, known for its array of shops, cafes, and restaurants.

Residents of Hudson House also enjoy access to beautifully maintained communal gardens, perfect for relaxing outdoors, along with private external storage for added convenience. This apartment is ideal for those seeking a modern lifestyle in a desirable area. Don't miss the opportunity to make this lovely flat your new home.

Contact Oakheart Property to arrange your viewing today.





Energy Efficiency Rating		
	Current	Potential
Very energy efficient - lower running costs		
(92 plus) A		
(81-91) B	83	83
(69-80) C		
(55-68) D		
(39-54) E		
(21-38) F		
(1-20) G		
Not energy efficient - higher running costs		
England & Wales	EU Directive 2002/91/EC	



oakheart

Oakheart Chelmsford
01245 800181
chelmsford@oakheart.co.uk
20 Victoria Road, Chelmsford, Essex,